

## Product datasheet for **TA363232**

### Bscl2 Rabbit Polyclonal Antibody

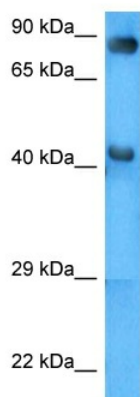
#### Product data:

Product Type:	Primary Antibodies
Applications:	WB
Reactivity:	Mouse
Host:	Rabbit
Clonality:	Polyclonal
Immunogen:	The immunogen is a synthetic peptide directed towards the middle region of mouse BSCL2
Specificity:	<b>Expected reactivity:</b> Mouse
Formulation:	Liquid. Purified antibody supplied in 1x PBS buffer with 0.09% (w/v) sodium azide and 2% sucrose. <i>Note that this product is shipped as lyophilized powder to China customers.</i>
Concentration:	lot specific
Purification:	Affinity purified
Conjugation:	Unconjugated
Storage:	For short term use, store at 2-8°C up to 1 week. For long term storage, store at -20°C in small aliquots to prevent freeze-thaw cycles.
Stability:	Shelf life: one year from despatch.
Predicted Protein Size:	42 kDa
Gene Name:	Berardinelli-Seip congenital lipodystrophy 2 (seipin)
Database Link:	<a href="#">NP_001129536.1</a> <a href="#">Entrez Gene 14705 Mouse</a> <a href="#">Q9Z2E9</a>
Background:	Is a regulator of lipid catabolism essential for adipocyte differentiation. Necessary for correct lipid storage and lipid droplets maintenance; may play a tissue-autonomous role in controlling lipid storage in adipocytes and in preventing ectopic lipid droplet formation in non-adipose tissues. May also be involved in the central regulation of energy homeostasis.
Synonyms:	GNG3LG; HMN5; MGC4694; OTTHUMP00000198007; seipin; SPG17



[View online »](#)

## Product images:



Host: Rabbit  
Target Name: Bsc12  
Sample Type: Mouse Testis Lysate  
Antibody Dilution: 1.0 $\mu$ g/ml

Host: Rabbit  
Target Name: BSCL2  
Sample Tissue: Mouse Testis lysates  
Antibody Dilution: 1  $\mu$ g/ml