

Product datasheet for **TA363231**

Clec10a Rabbit Polyclonal Antibody

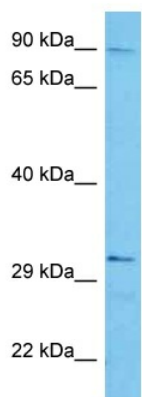
Product data:

Product Type:	Primary Antibodies
Applications:	WB
Reactivity:	Rat
Host:	Rabbit
Clonality:	Polyclonal
Immunogen:	The immunogen is a synthetic peptide directed towards the c terminal region of rat MGL1
Specificity:	Expected reactivity: Rat
Formulation:	Liquid. Purified antibody supplied in 1x PBS buffer with 0.09% (w/v) sodium azide and 2% sucrose.
Concentration:	lot specific
Purification:	Affinity purified
Conjugation:	Unconjugated
Storage:	For short term use, store at 2-8°C up to 1 week. For long term storage, store at -20°C in small aliquots to prevent freeze-thaw cycles.
Stability:	Shelf life: one year from despatch.
Predicted Protein Size:	33 kDa
Gene Name:	C-type lectin domain family 10, member A
Database Link:	NP_071788.2 Entrez Gene 64195 Rat P49301
Background:	may play a role in differentiation of macrophages [RGD, Feb 2006]
Synonyms:	CD301; CLECSF13; CLECSF14; HML; HML2



[View online »](#)

Product images:



Host: Rabbit
Target Name: Mgl1
Sample Type: Rat Testis Lysate
Antibody Dilution: 1.0 μ g/ml

Host: Rabbit
Target Name: MGL1
Sample Tissue: Rat Testis lysates
Antibody Dilution: 1 μ g/ml