

## Product datasheet for **TA363226**

### MSL3 Rabbit Polyclonal Antibody

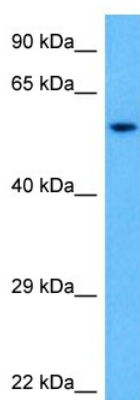
#### Product data:

Product Type:	Primary Antibodies
Applications:	WB
Reactivity:	Mouse
Host:	Rabbit
Clonality:	Polyclonal
Immunogen:	The immunogen is a synthetic peptide directed towards the middle region of mouse MSL3
Specificity:	<b>Expected reactivity:</b> Mouse
Formulation:	Liquid. Purified antibody supplied in 1x PBS buffer with 0.09% (w/v) sodium azide and 2% sucrose. <i>Note that this product is shipped as lyophilized powder to China customers.</i>
Concentration:	lot specific
Purification:	Affinity purified
Conjugation:	Unconjugated
Storage:	For short term use, store at 2-8°C up to 1 week. For long term storage, store at -20°C in small aliquots to prevent freeze-thaw cycles.
Stability:	Shelf life: one year from despatch.
Predicted Protein Size:	57 kDa
Gene Name:	male-specific lethal 3 homolog (Drosophila)
Database Link:	<a href="#">NP_034962.2</a> <a href="#">Entrez Gene 17692 Mouse</a> <a href="#">Q9WVG9</a>
Background:	May be involved in chromatin remodeling and transcriptional regulation. May have a role in X inactivation. Component of the MSL complex which is responsible for the majority of histone H4 acetylation at 'Lys-16' which is implicated in the formation of higher-order chromatin structure. Specifically recognizes histone H4 monomethylated at 'Lys-20' (H4K20Me1) in a DNA-dependent manner and is proposed to be involved in chromosomal targeting of the MSL complex (By similarity).
Synonyms:	DKFZp586J1822; MSL3L1



[View online »](#)

## Product images:



Host: Rabbit  
Target Name: Msl3  
Sample Type: Mouse Lung Lysate  
Antibody Dilution: 1.0 $\mu$ g/ml

Host: Rabbit  
Target Name: MSL3  
Sample Tissue: Mouse Lung lysates  
Antibody Dilution: 1 ug/ml