

Product datasheet for **TA363225**

Pdia6 Rabbit Polyclonal Antibody

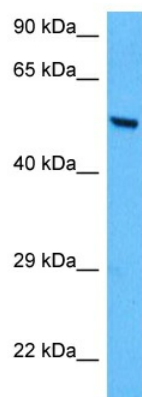
Product data:

Product Type:	Primary Antibodies
Applications:	WB
Reactivity:	Mouse
Host:	Rabbit
Clonality:	Polyclonal
Immunogen:	The immunogen is a synthetic peptide directed towards the middle region of mouse PDIA6
Specificity:	Expected reactivity: Mouse
Formulation:	Liquid. Purified antibody supplied in 1x PBS buffer with 0.09% (w/v) sodium azide and 2% sucrose. <i>Note that this product is shipped as lyophilized powder to China customers.</i>
Concentration:	lot specific
Purification:	Affinity purified
Conjugation:	Unconjugated
Storage:	For short term use, store at 2-8°C up to 1 week. For long term storage, store at -20°C in small aliquots to prevent freeze-thaw cycles.
Stability:	Shelf life: one year from despatch.
Predicted Protein Size:	48 kDa
Gene Name:	protein disulfide isomerase associated 6
Database Link:	NP_082235.1 Entrez Gene 71853 Mouse Q922R8
Background:	May function as a chaperone that inhibits aggregation of misfolded proteins. Negatively regulates the unfolded protein response (UPR) through binding to UPR sensors such as ERN1, which in turn inactivates ERN1 signaling (By similarity). May also regulate the UPR via the EIF2AK3 UPR sensor (By similarity). Plays a role in platelet aggregation and activation by agonists such as convulxin, collagen and thrombin (By similarity).
Synonyms:	ERP5; P5; TXNDC7



[View online »](#)

Product images:



Host: Rabbit
Target Name: Pdia6
Sample Type: Mouse Testis Lysate
Antibody Dilution: 1.0 μ g/ml

Host: Rabbit
Target Name: PDIA6
Sample Tissue: Mouse Testis lysates
Antibody Dilution: 1 ug/ml