

Product datasheet for **TA363223**

Purb Rabbit Polyclonal Antibody

Product data:

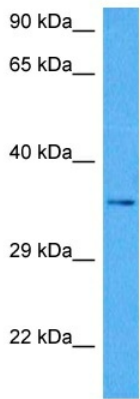
Product Type:	Primary Antibodies
Applications:	WB
Reactivity:	Mouse
Host:	Rabbit
Clonality:	Polyclonal
Immunogen:	The immunogen is a synthetic peptide directed towards the C terminal region of mouse PURB
Specificity:	Expected reactivity: Mouse
Formulation:	Liquid. Purified antibody supplied in 1x PBS buffer with 0.09% (w/v) sodium azide and 2% sucrose. <i>Note that this product is shipped as lyophilized powder to China customers.</i>
Concentration:	lot specific
Purification:	Affinity purified
Conjugation:	Unconjugated
Storage:	For short term use, store at 2-8°C up to 1 week. For long term storage, store at -20°C in small aliquots to prevent freeze-thaw cycles.
Stability:	Shelf life: one year from despatch.
Predicted Protein Size:	35 kDa
Gene Name:	purine rich element binding protein B
Database Link:	NP_035351.1 Entrez Gene 19291 Mouse O35295
Background:	Has capacity to bind repeated elements in single-stranded DNA such as the purine-rich single strand of the PUR element located upstream of the MYC gene. Participates in transcriptional and translational regulation of alpha-MHC expression in cardiac myocytes by binding to the purine-rich negative regulatory (PNR) element. Modulates constitutive liver galectin-3 gene transcription by binding to its promoter. May play a role in the dendritic transport of a subset of mRNAs (By similarity). Plays a role in the control of vascular smooth muscle (VSM) alpha-actin gene transcription as repressor in myoblasts and fibroblasts.



[View online »](#)

Synonyms: MGC126784; MGC126786; PURBETA

Product images:



Host: Rabbit
Target Name: Purb
Sample Type: Mouse Stomach Lysate
Antibody Dilution: 1.0 μ g/ml

Host: Rabbit
Target Name: PURB
Sample Tissue: Mouse Stomach lysates
Antibody Dilution: 1 μ g/ml