

Product datasheet for **TA363216**

Aldh3a2 Rabbit Polyclonal Antibody

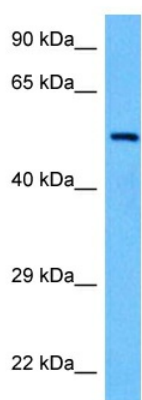
Product data:

Product Type:	Primary Antibodies
Applications:	WB
Reactivity:	Mouse
Host:	Rabbit
Clonality:	Polyclonal
Immunogen:	The immunogen is a synthetic peptide directed towards the middle region of mouse ALDH3A2
Specificity:	Expected reactivity: Mouse
Formulation:	Liquid. Purified antibody supplied in 1x PBS buffer with 0.09% (w/v) sodium azide and 2% sucrose. <i>Note that this product is shipped as lyophilized powder to China customers.</i>
Concentration:	lot specific
Purification:	Affinity purified
Conjugation:	Unconjugated
Storage:	For short term use, store at 2-8°C up to 1 week. For long term storage, store at -20°C in small aliquots to prevent freeze-thaw cycles.
Stability:	Shelf life: one year from despatch.
Predicted Protein Size:	53 kDa
Gene Name:	aldehyde dehydrogenase family 3, subfamily A2
Database Link:	NP_031463.2 Entrez Gene 11671 Mouse P47740
Background:	Catalyzes the oxidation of long-chain aliphatic aldehydes to fatty acids. Active on a variety of saturated and unsaturated aliphatic aldehydes between 6 and 24 carbons in length. Responsible for conversion of the sphingosine 1-phosphate (S1P) degradation product hexadecenal to hexadecenoic acid.
Synonyms:	ALDH10; DKFZp686E23276; FALDH; FLJ20851; OTTHUMP00000065801; SLS



[View online »](#)

Product images:



Host: Rabbit
Target Name: Aldh3a2
Sample Type: Mouse Stomach Lysate
Antibody Dilution: 1.0 μ g/ml

Host: Rabbit
Target Name: ALDH3A2
Sample Tissue: Mouse Stomach lysates
Antibody Dilution: 1 ug/ml