

Product datasheet for **TA363213**

PPP2R2a Rabbit Polyclonal Antibody

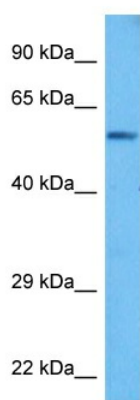
Product data:

| | |
|-------------------------|---|
| Product Type: | Primary Antibodies |
| Applications: | WB |
| Reactivity: | Mouse |
| Host: | Rabbit |
| Clonality: | Polyclonal |
| Immunogen: | The immunogen is a synthetic peptide directed towards the middle region of mouse PPP2R2A |
| Specificity: | Expected reactivity: Mouse |
| Formulation: | Liquid. Purified antibody supplied in 1x PBS buffer with 0.09% (w/v) sodium azide and 2% sucrose. <i>Note that this product is shipped as lyophilized powder to China customers.</i> |
| Concentration: | lot specific |
| Purification: | Affinity purified |
| Conjugation: | Unconjugated |
| Storage: | For short term use, store at 2-8°C up to 1 week. For long term storage, store at -20°C in small aliquots to prevent freeze-thaw cycles. |
| Stability: | Shelf life: one year from despatch. |
| Predicted Protein Size: | 52 kDa |
| Gene Name: | protein phosphatase 2, regulatory subunit B, alpha |
| Database Link: | NP_001192117.1 Entrez Gene 71978 Mouse Q6P1F6 |
| Background: | The B regulatory subunit might modulate substrate selectivity and catalytic activity, and also might direct the localization of the catalytic enzyme to a particular subcellular compartment. |
| Synonyms: | B55-ALPHA; B55A; FLJ26613; MGC52248; PR52A; PR55A |



[View online »](#)

Product images:



Host: Rabbit
Target Name: Ppp2r2a
Sample Type: Mouse Skeletal Muscle Lysate
Antibody Dilution: 1.0 µg/ml

Host: Rabbit
Target Name: PPP2R2A
Sample Tissue: Mouse Skeletal Muscle lysates
Antibody Dilution: 1 µg/ml