

Product datasheet for **TA363211**

Igf2bp3 Rabbit Polyclonal Antibody

Product data:

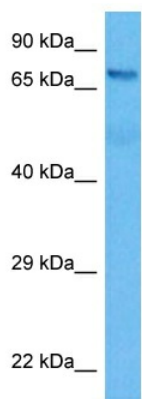
Product Type:	Primary Antibodies
Applications:	WB
Reactivity:	Mouse
Host:	Rabbit
Clonality:	Polyclonal
Immunogen:	The immunogen is a synthetic peptide directed towards the middle region of mouse IGF2BP3
Specificity:	Expected reactivity: Mouse
Formulation:	Liquid. Purified antibody supplied in 1x PBS buffer with 0.09% (w/v) sodium azide and 2% sucrose. <i>Note that this product is shipped as lyophilized powder to China customers.</i>
Concentration:	lot specific
Purification:	Affinity purified
Conjugation:	Unconjugated
Storage:	For short term use, store at 2-8°C up to 1 week. For long term storage, store at -20°C in small aliquots to prevent freeze-thaw cycles.
Stability:	Shelf life: one year from despatch.
Predicted Protein Size:	64 kDa
Gene Name:	insulin-like growth factor 2 mRNA binding protein 3
Database Link:	NP_076159.3 Entrez Gene 140488 Mouse Q9CPN8
Background:	RNA-binding factor that may recruit target transcripts to cytoplasmic protein-RNA complexes (mRNPs). This transcript 'caging' into mRNPs allows mRNA transport and transient storage. It also modulates the rate and location at which target transcripts encounter the translational apparatus and shields them from endonuclease attacks or microRNA-mediated degradation. Binds to the 3' UTR of CD44 mRNA and stabilizes it, hence promotes cell adhesion and invadopodia formation (By similarity). Binds to beta-actin/ACTB and MYC transcripts (By similarity). Binds to the 5'-UTR of the insulin-like growth factor 2 (IGF2) mRNAs.



[View online »](#)

Synonyms: CT98; DKFZp686F1078; hKOC; IMP-3; IMP3; KOC1; VICKZ3

Product images:



Host: Rabbit
 Target Name: Igf2bp3
 Sample Type: Mouse Brain Lysate
 Antibody Dilution: 1.0µg/ml

Host: Rabbit
 Target Name: IGF2BP3
 Sample Tissue: Mouse Brain lysates
 Antibody Dilution: 1ug/ml