

Product datasheet for **TA363203**

Gamt Rabbit Polyclonal Antibody

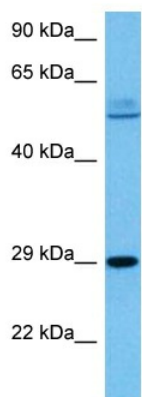
Product data:

Product Type:	Primary Antibodies
Applications:	WB
Reactivity:	Mouse
Host:	Rabbit
Clonality:	Polyclonal
Immunogen:	The immunogen is a synthetic peptide directed towards the middle region of mouse GAMT
Specificity:	Expected reactivity: Mouse
Formulation:	Liquid. Purified antibody supplied in 1x PBS buffer with 0.09% (w/v) sodium azide and 2% sucrose. <i>Note that this product is shipped as lyophilized powder to China customers.</i>
Concentration:	lot specific
Purification:	Affinity purified
Conjugation:	Unconjugated
Storage:	For short term use, store at 2-8°C up to 1 week. For long term storage, store at -20°C in small aliquots to prevent freeze-thaw cycles.
Stability:	Shelf life: one year from despatch.
Predicted Protein Size:	27 kDa
Gene Name:	guanidinoacetate methyltransferase
Database Link:	NP_034385.1 Entrez Gene 14431 Mouse O35969-2
Background:	Converts guanidinoacetate to creatine, using S-adenosylmethionine as the methyl donor. Important in nervous system development.
Synonyms:	PIG2; TP53I2



[View online »](#)

Product images:



Host: Rabbit
Target Name: Gamt
Sample Type: Mouse Skeletal Muscle Lysate
Antibody Dilution: 1.0 μ g/ml

Host: Rabbit
Target Name: GAMT
Sample Tissue: Mouse Skeletal Muscle lysates
Antibody Dilution: 1 μ g/ml