

Product datasheet for **TA363198**

Spc25 Rabbit Polyclonal Antibody

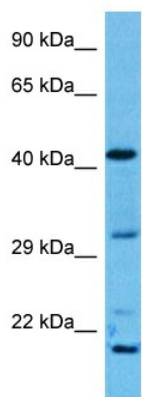
Product data:

Product Type:	Primary Antibodies
Applications:	WB
Reactivity:	Mouse
Host:	Rabbit
Clonality:	Polyclonal
Immunogen:	The immunogen is a synthetic peptide directed towards the C terminal region of mouse SPC25
Specificity:	Expected reactivity: Mouse
Formulation:	Liquid. Purified antibody supplied in 1x PBS buffer with 0.09% (w/v) sodium azide and 2% sucrose.
Concentration:	lot specific
Purification:	Affinity purified
Conjugation:	Unconjugated
Storage:	For short term use, store at 2-8°C up to 1 week. For long term storage, store at -20°C in small aliquots to prevent freeze-thaw cycles.
Stability:	Shelf life: one year from despatch.
Predicted Protein Size:	19 kDa
Gene Name:	SPC25, NDC80 kinetochore complex component, homolog (<i>S. cerevisiae</i>)
Database Link:	NP_001186052.1 Entrez Gene 66442 Mouse Q3UA16-2
Background:	This gene encodes a component of the kinetochore-associated NDC80 protein complex, which is required for the mitotic spindle checkpoint and for microtubule-kinetochore attachment. During meiosis in mouse, the protein localizes to the germinal vesicle and then is associated with the chromosomes following germinal vesicle breakdown. Knockdown of this gene in oocytes results in precocious polar body extrusion, chromosome misalignment and aberrant spindle formation. Alternative splicing results in multiple transcript variants.
Synonyms:	2600017H08Rik; AD024; hSpc25; MGC22228; SPBC25



[View online »](#)

Product images:



Host: Rabbit
Target Name: Spc25
Sample Type: Mouse Thymus Lysate
Antibody Dilution: 1.0 μ g/ml

Host: Rabbit
Target Name: SPC25
Sample Tissue: Mouse Thymus lysates
Antibody Dilution: 1 ug/ml