

## Product datasheet for **TA363196**

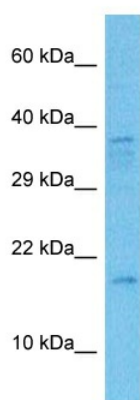
### LOC108167922 Rabbit Polyclonal Antibody

#### Product data:

Product Type:	Primary Antibodies
Applications:	WB
Reactivity:	Mouse
Host:	Rabbit
Clonality:	Polyclonal
Immunogen:	The immunogen is a synthetic peptide directed towards the middle region of mouse RPL27
Specificity:	<b>Expected reactivity:</b> Mouse
Formulation:	Liquid. Purified antibody supplied in 1x PBS buffer with 0.09% (w/v) sodium azide and 2% sucrose. <i>Note that this product is shipped as lyophilized powder to China customers.</i>
Concentration:	lot specific
Purification:	Affinity purified
Conjugation:	Unconjugated
Storage:	For short term use, store at 2-8°C up to 1 week. For long term storage, store at -20°C in small aliquots to prevent freeze-thaw cycles.
Stability:	Shelf life: one year from despatch.
Predicted Protein Size:	16 kDa
Gene Name:	ribosomal protein L27 pseudogene
Database Link:	<a href="#">NP_035419.1</a> <a href="#">Entrez Gene 19942 Mouse</a> <a href="#">P61358</a>
Background:	Component of the large ribosomal subunit (By similarity). Required for proper rRNA processing and maturation of 28S and 5.8S rRNAs (By similarity).



[View online »](#)

**Product images:**

Host: Rabbit  
Target Name: Rpl27  
Sample Type: Mouse Spleen Lysate  
Antibody Dilution: 1.0 $\mu$ g/ml

Host: Rabbit  
Target Name: RPL27  
Sample Tissue: Mouse Spleen lysates  
Antibody Dilution: 1 ug/ml