

Product datasheet for **TA363183**

Mmp20 Rabbit Polyclonal Antibody

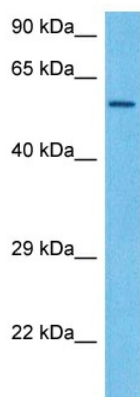
Product data:

Product Type:	Primary Antibodies
Applications:	WB
Reactivity:	Mouse
Host:	Rabbit
Clonality:	Polyclonal
Immunogen:	The immunogen is a synthetic peptide directed towards the middle region of mouse MMP20
Specificity:	Expected reactivity: Mouse
Formulation:	Liquid. Purified antibody supplied in 1x PBS buffer with 0.09% (w/v) sodium azide and 2% sucrose. <i>Note that this product is shipped as lyophilized powder to China customers.</i>
Concentration:	lot specific
Purification:	Affinity purified
Conjugation:	Unconjugated
Storage:	For short term use, store at 2-8°C up to 1 week. For long term storage, store at -20°C in small aliquots to prevent freeze-thaw cycles.
Stability:	Shelf life: one year from despatch.
Predicted Protein Size:	53 kDa
Gene Name:	matrix metalloproteinase 20 (enamelysin)
Database Link:	NP_038931.1 Entrez Gene 30800 Mouse P57748
Background:	This gene encodes a member of the matrix metalloproteinase family of zinc-dependent endopeptidases capable of degrading extracellular matrix proteins. This gene is expressed specifically in the ameloblasts and odontoblasts, and the encoded protein is an inactive zymogen that requires proteolytic removal of a N-terminal propeptide to become enzymatically active. Mice lacking the encoded protein display an amelogenesis imperfecta phenotype.
Synonyms:	AI2A2; Enamelysin; MMP-20



[View online »](#)

Product images:



Host: Rabbit
Target Name: Mmp20
Sample Type: Mouse Thymus Lysate
Antibody Dilution: 1.0µg/ml

Host: Rabbit
Target Name: MMP20
Sample Tissue: Mouse Thymus lysates
Antibody Dilution: 1 ug/ml