

Product datasheet for **TA363172**

Lrrfip1 Rabbit Polyclonal Antibody

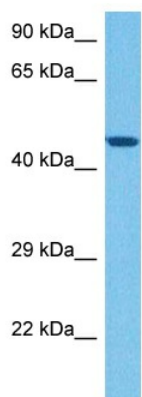
Product data:

Product Type:	Primary Antibodies
Applications:	WB
Reactivity:	Mouse
Host:	Rabbit
Clonality:	Polyclonal
Immunogen:	The immunogen is a synthetic peptide directed towards the middle region of mouse LRRFIP1
Specificity:	Expected reactivity: Mouse
Formulation:	Liquid. Purified antibody supplied in 1x PBS buffer with 0.09% (w/v) sodium azide and 2% sucrose. <i>Note that this product is shipped as lyophilized powder to China customers.</i>
Concentration:	lot specific
Purification:	Affinity purified
Conjugation:	Unconjugated
Storage:	For short term use, store at 2-8°C up to 1 week. For long term storage, store at -20°C in small aliquots to prevent freeze-thaw cycles.
Stability:	Shelf life: one year from despatch.
Predicted Protein Size:	52 kDa
Gene Name:	leucine rich repeat (in FLII) interacting protein 1
Database Link:	NP_001104781.1 Entrez Gene 16978 Mouse Q3UZ39-3
Background:	Transcriptional repressor which preferentially binds to the GC-rich consensus sequence (5'-AGCCCCGGCG-3') and may regulate expression of TNF, EGFR and PDGFA. May control smooth muscle cells proliferation following artery injury through PDGFA repression. May also bind double-stranded RNA (By similarity). Positively regulates Toll-like receptor (TLR) signaling in response to agonist probably by competing with the negative FLII regulator for MYD88-binding (By similarity).
Synonyms:	FLAP-1; FLIAP1; GCF-2; GCF2; HUF1-1; MGC10947; MGC119738; MGC119739; TRIP



[View online »](#)

Product images:



Host: Rabbit
Target Name: Lrrfip1
Sample Type: Mouse Heart Lysate
Antibody Dilution: 1.0 μ g/ml

Host: Rabbit
Target Name: LRRFIP1
Sample Tissue: Mouse Heart lysates
Antibody Dilution: 1 μ g/ml