

## Product datasheet for **TA363171**

### Mta3 Rabbit Polyclonal Antibody

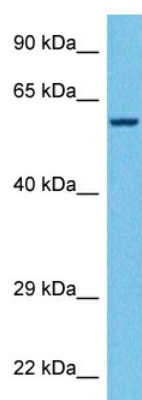
#### Product data:

Product Type:	Primary Antibodies
Applications:	WB
Reactivity:	Mouse
Host:	Rabbit
Clonality:	Polyclonal
Immunogen:	The immunogen is a synthetic peptide directed towards the middle region of mouse MTA3
Specificity:	<b>Expected reactivity:</b> Mouse
Formulation:	Liquid. Purified antibody supplied in 1x PBS buffer with 0.09% (w/v) sodium azide and 2% sucrose. <i>Note that this product is shipped as lyophilized powder to China customers.</i>
Concentration:	lot specific
Purification:	Affinity purified
Conjugation:	Unconjugated
Storage:	For short term use, store at 2-8°C up to 1 week. For long term storage, store at -20°C in small aliquots to prevent freeze-thaw cycles.
Stability:	Shelf life: one year from despatch.
Predicted Protein Size:	56 kDa
Gene Name:	metastasis associated 3
Database Link:	<a href="#">NP_001164525.1</a> <a href="#">Entrez Gene 116871 Mouse</a> <a href="#">Q924K8-2</a>
Background:	Plays a role in maintenance of the normal epithelial architecture through the repression of SNAI1 transcription in a histone deacetylase-dependent manner, and thus the regulation of E-cadherin levels. Contributes to transcriptional repression by BCL6 (By similarity).
Synonyms:	KIAA1266



[View online »](#)

## Product images:



Host: Rabbit  
Target Name: Mta3  
Sample Type: Mouse Kidney Lysate  
Antibody Dilution: 1.0 $\mu$ g/ml

Host: Rabbit  
Target Name: MTA3  
Sample Tissue: Mouse Kidney lysates  
Antibody Dilution: 1 $\mu$ g/ml