

Product datasheet for **TA363163**

Eef1a2 Rabbit Polyclonal Antibody

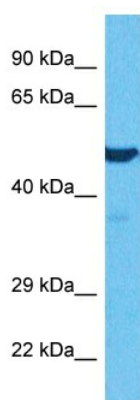
Product data:

Product Type:	Primary Antibodies
Applications:	WB
Reactivity:	Mouse
Host:	Rabbit
Clonality:	Polyclonal
Immunogen:	The immunogen is a synthetic peptide directed towards the middle region of mouse EEF1A2
Specificity:	Expected reactivity: Mouse
Formulation:	Liquid. Purified antibody supplied in 1x PBS buffer with 0.09% (w/v) sodium azide and 2% sucrose. <i>Note that this product is shipped as lyophilized powder to China customers.</i>
Concentration:	lot specific
Purification:	Affinity purified
Conjugation:	Unconjugated
Storage:	For short term use, store at 2-8°C up to 1 week. For long term storage, store at -20°C in small aliquots to prevent freeze-thaw cycles.
Stability:	Shelf life: one year from despatch.
Predicted Protein Size:	50 kDa
Gene Name:	eukaryotic translation elongation factor 1 alpha 2
Database Link:	NP_031932.1 Entrez Gene 13628 Mouse P62631
Background:	This protein promotes the GTP-dependent binding of aminoacyl-tRNA to the A-site of ribosomes during protein biosynthesis.
Synonyms:	eEF1A-2; EEF1AL; EF-1-alpha-2; EF1A; FLJ41696; HS1; OTTHUMP00000031776; statin-like; STN; STNL



[View online »](#)

Product images:



Host: Rabbit
Target Name: Eef1a2
Sample Type: Mouse Lung Lysate
Antibody Dilution: 1.0 μ g/ml

Host: Rabbit
Target Name: EEf1A2
Sample Tissue: Mouse Lung lysates
Antibody Dilution: 1 μ g/ml