

## Product datasheet for **TA363161**

### Nfix Rabbit Polyclonal Antibody

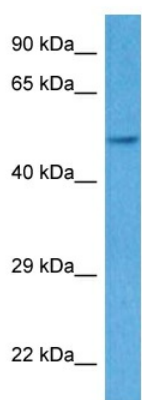
#### Product data:

Product Type:	Primary Antibodies
Applications:	WB
Reactivity:	Mouse
Host:	Rabbit
Clonality:	Polyclonal
Immunogen:	The immunogen is a synthetic peptide directed towards the middle region of mouse NFIX
Specificity:	<b>Expected reactivity:</b> Mouse
Formulation:	Liquid. Purified antibody supplied in 1x PBS buffer with 0.09% (w/v) sodium azide and 2% sucrose.
Concentration:	lot specific
Purification:	Affinity purified
Conjugation:	Unconjugated
Storage:	For short term use, store at 2-8°C up to 1 week. For long term storage, store at -20°C in small aliquots to prevent freeze-thaw cycles.
Stability:	Shelf life: one year from despatch.
Predicted Protein Size:	53 kDa
Gene Name:	nuclear factor I/X
Database Link:	<a href="#">NP_001075451.1</a> <a href="#">Entrez Gene 18032 Mouse P70257</a>
Background:	Recognizes and binds the palindromic sequence 5'-TTGGCNNNNNGCCAA-3' present in viral and cellular promoters and in the origin of replication of adenovirus type 2. These proteins are individually capable of activating transcription and replication. Isoform NFIX1 acts as a transcriptional activator while isoform NFIX3 acts as a repressor.
Synonyms:	CTF; NF-I/X; NF1-X; NF1A; NFI-X



[View online »](#)

## Product images:



Host: Rabbit  
Target Name: Nfix  
Sample Type: Mouse Heart Lysate  
Antibody Dilution: 1.0 $\mu$ g/ml

Host: Rabbit  
Target Name: NFIX  
Sample Tissue: Mouse Heart lysates  
Antibody Dilution: 1 $\mu$ g/ml