

Product datasheet for **TA363157**

Phb2 Rabbit Polyclonal Antibody

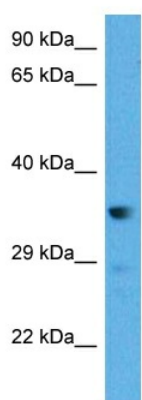
Product data:

Product Type:	Primary Antibodies
Applications:	WB
Reactivity:	Mouse
Host:	Rabbit
Clonality:	Polyclonal
Immunogen:	The immunogen is a synthetic peptide directed towards the middle region of mouse PHB2
Specificity:	Expected reactivity: Mouse
Formulation:	Liquid. Purified antibody supplied in 1x PBS buffer with 0.09% (w/v) sodium azide and 2% sucrose. <i>Note that this product is shipped as lyophilized powder to China customers.</i>
Concentration:	lot specific
Purification:	Affinity purified
Conjugation:	Unconjugated
Storage:	For short term use, store at 2-8°C up to 1 week. For long term storage, store at -20°C in small aliquots to prevent freeze-thaw cycles.
Stability:	Shelf life: one year from despatch.
Predicted Protein Size:	33 kDa
Gene Name:	prohibitin 2
Database Link:	NP_031557.2 Entrez Gene 12034 Mouse O35129
Background:	Acts as a mediator of transcriptional repression by nuclear hormone receptors via recruitment of histone deacetylases. Functions as an estrogen receptor (ER)-selective coregulator that potentiates the inhibitory activities of antiestrogens and represses the activity of estrogens. Competes with NCOA1 for modulation of ER transcriptional activity. Probably involved in regulating mitochondrial respiration activity and in aging.
Synonyms:	BAP; Bap37; BCAP37; D-prohibitin; MGC117268; p22; PNAS-141; REA



[View online »](#)

Product images:



Host: Rabbit
Target Name: Phb2
Sample Type: Mouse Liver Lysate
Antibody Dilution: 1.0 μ g/ml

Host: Rabbit
Target Name: PHB2
Sample Tissue: Mouse Liver lysates
Antibody Dilution: 1 ug/ml