

## Product datasheet for **TA363155**

### Crlf2 Rabbit Polyclonal Antibody

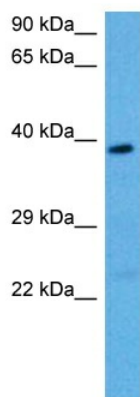
#### Product data:

Product Type:	Primary Antibodies
Applications:	WB
Reactivity:	Mouse
Host:	Rabbit
Clonality:	Polyclonal
Immunogen:	The immunogen is a synthetic peptide directed towards the middle region of mouse CRLF2
Specificity:	<b>Expected reactivity:</b> Mouse
Formulation:	Liquid. Purified antibody supplied in 1x PBS buffer with 0.09% (w/v) sodium azide and 2% sucrose. <i>Note that this product is shipped as lyophilized powder to China customers.</i>
Concentration:	lot specific
Purification:	Affinity purified
Conjugation:	Unconjugated
Storage:	For short term use, store at 2-8°C up to 1 week. For long term storage, store at -20°C in small aliquots to prevent freeze-thaw cycles.
Stability:	Shelf life: one year from despatch.
Predicted Protein Size:	38 kDa
Gene Name:	cytokine receptor-like factor 2
Database Link:	<a href="#">NP_001158207.1</a> <a href="#">Entrez Gene 57914 Mouse</a> <a href="#">Q8CII9</a>
Background:	Receptor for thymic stromal lymphopoietin (TSLP). Forms a functional complex with TSLP and IL7R which is capable of stimulating cell proliferation through activation of STAT3 and STAT5. Also activates JAK2. Implicated in the development of the hematopoietic system.
Synonyms:	CRL2; CRLF2Y; IL-XR; ILXR; TSLPR



[View online »](#)

Product images:



Host: Rabbit  
Target Name: Crif2  
Sample Type: Mouse Spleen Lysate  
Antibody Dilution: 1.0µg/ml

Host: Rabbit  
Target Name: CRLF2  
Sample Tissue: Mouse Spleen lysates  
Antibody Dilution: 1ug/ml