

## Product datasheet for **TA363150**

### Pr7 Rabbit Polyclonal Antibody

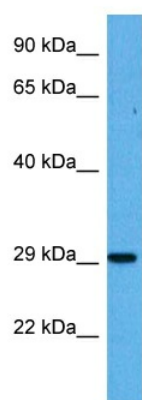
#### Product data:

Product Type:	Primary Antibodies
Applications:	WB
Reactivity:	Mouse
Host:	Rabbit
Clonality:	Polyclonal
Immunogen:	The immunogen is a synthetic peptide directed towards the middle region of mouse PRR7
Specificity:	<b>Expected reactivity:</b> Mouse
Formulation:	Liquid. Purified antibody supplied in 1x PBS buffer with 0.09% (w/v) sodium azide and 2% sucrose. <i>Note that this product is shipped as lyophilized powder to China customers.</i>
Concentration:	lot specific
Purification:	Affinity purified
Conjugation:	Unconjugated
Storage:	For short term use, store at 2-8°C up to 1 week. For long term storage, store at -20°C in small aliquots to prevent freeze-thaw cycles.
Stability:	Shelf life: one year from despatch.
Predicted Protein Size:	29 kDa
Gene Name:	proline rich 7 (synaptic)
Database Link:	<a href="#">NP_001025467.1</a> <a href="#">Entrez Gene 432763 Mouse</a> <a href="#">Q3V0I2</a>
Background:	Acts as a synapse-to-nucleus messenger to promote NMDA receptor-mediated excitotoxicity in neurons in a JUN-dependent manner (By similarity). Inhibits ubiquitination-mediated degradation and promotes phosphorylation and transcriptional activity of transcription factor JUN (By similarity). Might play a redundant role in the regulation of T cell receptor signaling. Might promote apoptosis in T cells (By similarity).
Synonyms:	MGC10772



[View online »](#)

## Product images:



Host: Rabbit  
Target Name: Prr7  
Sample Type: Mouse Kidney Lysate  
Antibody Dilution: 1.0 $\mu$ g/ml

Host: Rabbit  
Target Name: PRR7  
Sample Tissue: Mouse Kidney lysates  
Antibody Dilution: 1 ug/ml