

## Product datasheet for **TA363146**

### Clic1 Rabbit Polyclonal Antibody

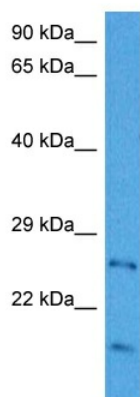
#### Product data:

Product Type:	Primary Antibodies
Applications:	WB
Reactivity:	Mouse
Host:	Rabbit
Clonality:	Polyclonal
Immunogen:	The immunogen is a synthetic peptide directed towards the middle region of mouse CLIC1
Specificity:	<b>Expected reactivity:</b> Mouse
Formulation:	Liquid. Purified antibody supplied in 1x PBS buffer with 0.09% (w/v) sodium azide and 2% sucrose. <i>Note that this product is shipped as lyophilized powder to China customers.</i>
Concentration:	lot specific
Purification:	Affinity purified
Conjugation:	Unconjugated
Storage:	For short term use, store at 2-8°C up to 1 week. For long term storage, store at -20°C in small aliquots to prevent freeze-thaw cycles.
Stability:	Shelf life: one year from despatch.
Predicted Protein Size:	26 kDa
Gene Name:	chloride intracellular channel 1
Database Link:	<a href="#">NP_254279.1</a> <a href="#">Entrez Gene 114584 Mouse</a> <a href="#">Q9Z1Q5</a>
Background:	Can insert into membranes and form chloride ion channels. Channel activity depends on the pH. Membrane insertion seems to be redox-regulated and may occur only under oxydizing conditions (By similarity).
Synonyms:	G6; hRNCC; NCC27; OTTHUMP00000029133; OTTHUMP00000029137; OTTHUMP00000174486; p64CLCP



[View online »](#)

## Product images:



Host: Rabbit  
Target Name: Clic1  
Sample Type: Mouse Heart Lysate  
Antibody Dilution: 1.0 $\mu$ g/ml

Host: Rabbit  
Target Name: CLIC1  
Sample Tissue: Mouse Heart lysates  
Antibody Dilution: 1  $\mu$ g/ml