

## Product datasheet for **TA363145**

### Gas2 Rabbit Polyclonal Antibody

#### Product data:

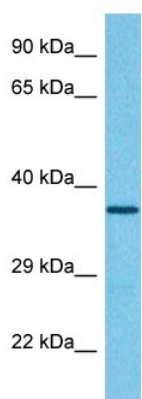
Product Type:	Primary Antibodies
Applications:	WB
Reactivity:	Mouse
Host:	Rabbit
Clonality:	Polyclonal
Immunogen:	The immunogen is a synthetic peptide directed towards the middle terminal region of Mouse GAS2
Specificity:	<b>Expected reactivity:</b> Mouse
Formulation:	Liquid. Purified antibody supplied in 1x PBS buffer with 0.09% (w/v) sodium azide and 2% sucrose. <i>Note that this product is shipped as lyophilized powder to China customers.</i>
Concentration:	lot specific
Purification:	Affinity purified
Conjugation:	Unconjugated
Storage:	For short term use, store at 2-8°C up to 1 week. For long term storage, store at -20°C in small aliquots to prevent freeze-thaw cycles.
Stability:	Shelf life: one year from despatch.
Predicted Protein Size:	35 kDa
Gene Name:	growth arrest specific 2
Database Link:	<a href="#">NP_032113.1</a> <a href="#">Entrez Gene 14453 Mouse</a> <a href="#">P11862</a>
Background:	May play a role in apoptosis by acting as a cell death substrate for caspases. Is cleaved during apoptosis and the cleaved form induces dramatic rearrangements of the actin cytoskeleton and potent changes in the shape of the affected cells. May play a role in chondrocyte proliferation and differentiation, and in limb myogenesis. May be involved in the regulation of the apoptosis in the interdigital tissues of the developing hindlimb. May be involved in the membrane ruffling process.



[View online >](#)

Synonyms: GAS-2; MGC32610

### Product images:



Host: Rabbit  
Target Name: Gas2  
Sample Type: Mouse Liver Lysate  
Antibody Dilution: 1.0 $\mu$ g/ml

Host: Rabbit  
Target Name: GAS2  
Sample Tissue: Mouse Liver lysates  
Antibody Dilution: 1 $\mu$ g/ml