

Product datasheet for **TA363143**

Opn4 Rabbit Polyclonal Antibody

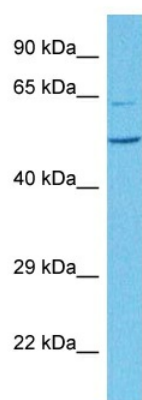
Product data:

Product Type:	Primary Antibodies
Applications:	WB
Reactivity:	Mouse
Host:	Rabbit
Clonality:	Polyclonal
Immunogen:	The immunogen is a synthetic peptide directed towards the N terminal region of Mouse OPN4
Specificity:	Expected reactivity: Mouse
Formulation:	Liquid. Purified antibody supplied in 1x PBS buffer with 0.09% (w/v) sodium azide and 2% sucrose. <i>Note that this product is shipped as lyophilized powder to China customers.</i>
Concentration:	lot specific
Purification:	Affinity purified
Conjugation:	Unconjugated
Storage:	For short term use, store at 2-8°C up to 1 week. For long term storage, store at -20°C in small aliquots to prevent freeze-thaw cycles.
Stability:	Shelf life: one year from despatch.
Predicted Protein Size:	51 kDa
Gene Name:	opsin 4 (melanopsin)
Database Link:	NP_001122071.1 Entrez Gene 30044 Mouse Q9QXZ9-2
Background:	Photoreceptor required for regulation of circadian rhythm. Contributes to pupillar reflex and other non-image forming responses to light. May be able to isomerize covalently bound all-trans retinal back to 11-cis retinal.
Synonyms:	melanopsin; MGC142118; MOP; Opsin-4



[View online »](#)

Product images:



Host: Rabbit
Target Name: Opn4
Sample Type: Mouse Kidney Lysate
Antibody Dilution: 1.0 μ g/ml

Host: Rabbit
Target Name: OPN4
Sample Tissue: Mouse Kidney lysates
Antibody Dilution: 1 μ g/ml