

Product datasheet for **TA363140**

Rhov Rabbit Polyclonal Antibody

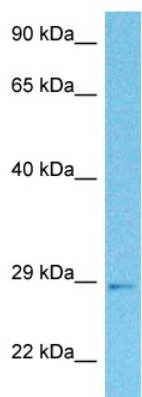
Product data:

Product Type:	Primary Antibodies
Applications:	WB
Reactivity:	Mouse
Host:	Rabbit
Clonality:	Polyclonal
Immunogen:	The immunogen is a synthetic peptide directed towards the N terminal region of Mouse RHOV
Specificity:	Expected reactivity: Mouse
Formulation:	Liquid. Purified antibody supplied in 1x PBS buffer with 0.09% (w/v) sodium azide and 2% sucrose.
Concentration:	lot specific
Purification:	Affinity purified
Conjugation:	Unconjugated
Storage:	For short term use, store at 2-8°C up to 1 week. For long term storage, store at -20°C in small aliquots to prevent freeze-thaw cycles.
Stability:	Shelf life: one year from despatch.
Predicted Protein Size:	26 kDa
Gene Name:	ras homolog family member V
Database Link:	NP_663505.1 Entrez Gene 228543 Mouse Q8VDU1
Background:	Plays a role in the control of the actin cytoskeleton via activation of the JNK pathway.
Synonyms:	ARHV; CHP; WRCH-2; WRCH2



[View online »](#)

Product images:



Host: Rabbit
Target Name: Rhov
Sample Type: Mouse Thymus Lysate
Antibody Dilution: 1.0 μ g/ml

Host: Rabbit
Target Name: RHOV
Sample Tissue: Mouse Thymus lysates
Antibody Dilution: 1ug/ml