

Product datasheet for **TA363135**

Gjb1 Rabbit Polyclonal Antibody

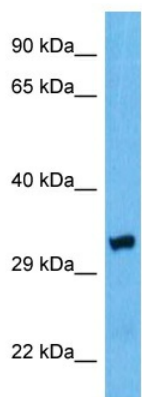
Product data:

Product Type:	Primary Antibodies
Applications:	WB
Reactivity:	Mouse
Host:	Rabbit
Clonality:	Polyclonal
Immunogen:	The immunogen is a synthetic peptide directed towards the middle region of mouse GJB1
Specificity:	Expected reactivity: Mouse
Formulation:	Liquid. Purified antibody supplied in 1x PBS buffer with 0.09% (w/v) sodium azide and 2% sucrose. <i>Note that this product is shipped as lyophilized powder to China customers.</i>
Concentration:	lot specific
Purification:	Affinity purified
Conjugation:	Unconjugated
Storage:	For short term use, store at 2-8°C up to 1 week. For long term storage, store at -20°C in small aliquots to prevent freeze-thaw cycles.
Stability:	Shelf life: one year from despatch.
Predicted Protein Size:	32 kDa
Gene Name:	gap junction protein, beta 1
Database Link:	NP_001289425.1 Entrez Gene 14618 Mouse P28230
Background:	This gene is a member of the gap junction protein (connexin) family. The encoded protein is a component of gap junctions, which are composed of arrays of intercellular channels that provide a route for the diffusion of ions and small molecules between cells. Mutations in a similar gene in human cause X-linked Charcot-Marie-Tooth disease, an inherited peripheral neuropathy. Alternative splicing results in multiple transcript variants encoding the same protein.
Synonyms:	CMTX; CMTX1; Connexin-32; CX32; OTTHUMP00000023504



[View online »](#)

Product images:



Host: Rabbit
Target Name: Gjb1
Sample Type: Mouse Heart Lysate
Antibody Dilution: 1.0 μ g/ml

Host: Rabbit
Target Name: GJB1
Sample Tissue: Mouse Heart lysates
Antibody Dilution: 1 μ g/ml