

Product datasheet for TA363125

Clec7a Rabbit Polyclonal Antibody

Product data:

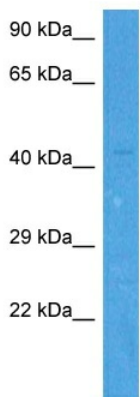
Product Type:	Primary Antibodies
Applications:	WB
Reactivity:	Mouse
Host:	Rabbit
Clonality:	Polyclonal
Immunogen:	The immunogen is a synthetic peptide directed towards the N terminal region of mouse CLEC7A
Specificity:	Expected reactivity: Mouse
Formulation:	Liquid. Purified antibody supplied in 1x PBS buffer with 0.09% (w/v) sodium azide and 2% sucrose. <i>Note that this product is shipped as lyophilized powder to China customers.</i>
Concentration:	lot specific
Purification:	Affinity purified
Conjugation:	Unconjugated
Storage:	For short term use, store at 2-8°C up to 1 week. For long term storage, store at -20°C in small aliquots to prevent freeze-thaw cycles.
Stability:	Shelf life: one year from despatch.
Predicted Protein Size:	26 kDa
Gene Name:	C-type lectin domain family 7, member a
Database Link:	Entrez Gene 56644 Mouse Q6QLQ4
Background:	Lectin that functions as pattern receptor specific for beta-1,3-linked and beta-1,6-linked glucans, such as cell wall constituents from pathogenic bacteria and fungi. Necessary for the TLR2-mediated inflammatory response and for TLR2-mediated activation of NF-kappa-B. Enhances cytokine production in macrophages and dendritic cells. Mediates production of reactive oxygen species in the cell. Mediates phagocytosis of C.albicans conidia. Binds T-cells in a way that does not involve their surface glycans and plays a role in T-cell activation. Stimulates T-cell proliferation.



[View online »](#)

Synonyms: BGR; CANDF4; CLECSF12; dectin-1; DECTIN1; hDectin-1

Product images:



Host: Rabbit
 Target Name: Clec7a
 Sample Type: Mouse Heart Lysate
 Antibody Dilution: 1.0µg/ml

Host: Rabbit
 Target Name: CLEC7A
 Sample Tissue: Mouse Heart lysates
 Antibody Dilution: 1ug/ml