

Product datasheet for **TA363123**

MIK1 Rabbit Polyclonal Antibody

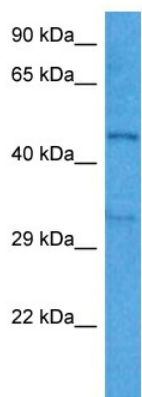
Product data:

Product Type:	Primary Antibodies
Applications:	WB
Reactivity:	Mouse
Host:	Rabbit
Clonality:	Polyclonal
Immunogen:	The immunogen is a synthetic peptide directed towards the middle region of mouse MLKL
Specificity:	Expected reactivity: Mouse
Formulation:	Liquid. Purified antibody supplied in 1x PBS buffer with 0.09% (w/v) sodium azide and 2% sucrose. <i>Note that this product is shipped as lyophilized powder to China customers.</i>
Concentration:	lot specific
Purification:	Affinity purified
Conjugation:	Unconjugated
Storage:	For short term use, store at 2-8°C up to 1 week. For long term storage, store at -20°C in small aliquots to prevent freeze-thaw cycles.
Stability:	Shelf life: one year from despatch.
Predicted Protein Size:	51 kDa
Gene Name:	mixed lineage kinase domain-like
Database Link:	NP_001297542.1 Entrez Gene 74568 Mouse Q9D2Y4
Background:	This gene belongs to the protein kinase superfamily. The encoded protein contains a protein kinase-like domain; however, is thought to lack protein kinase activity. This protein plays a critical role in tumor necrosis factor (TNF)-induced necroptosis, a programmed cell death process, via interaction with receptor-interacting protein 3 (Rip3), which is a key signaling molecule in necroptosis pathway. Knockout of this gene in mice showed that it is essential for necroptosis. Alternatively spliced transcript variants have been found for this gene.
Synonyms:	FLJ34389



[View online »](#)

Product images:



Host: Rabbit
Target Name: MIK1
Sample Type: Mouse Skeletal Muscle Lysate
Antibody Dilution: 1.0 μ g/ml

Host: Rabbit
Target Name: MLKL
Sample Tissue: Mouse Skeletal Muscle lysates
Antibody Dilution: 1 μ g/ml