

Product datasheet for **TA363121**

Dnm1l Rabbit Polyclonal Antibody

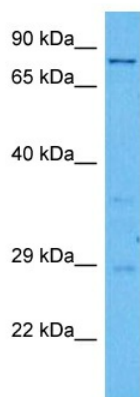
Product data:

Product Type:	Primary Antibodies
Applications:	WB
Reactivity:	Mouse
Host:	Rabbit
Clonality:	Polyclonal
Immunogen:	The immunogen is a synthetic peptide directed towards the middle region of mouse DNM1L
Specificity:	Expected reactivity: Mouse
Formulation:	Liquid. Purified antibody supplied in 1x PBS buffer with 0.09% (w/v) sodium azide and 2% sucrose. <i>Note that this product is shipped as lyophilized powder to China customers.</i>
Concentration:	lot specific
Purification:	Affinity purified
Conjugation:	Unconjugated
Storage:	For short term use, store at 2-8°C up to 1 week. For long term storage, store at -20°C in small aliquots to prevent freeze-thaw cycles.
Stability:	Shelf life: one year from despatch.
Predicted Protein Size:	81 kDa
Gene Name:	dynamin 1-like
Database Link:	NP_001021118.1 Entrez Gene 74006 Mouse Q8K1M6
Background:	This gene encodes a member of the dynamin family. The encoded protein is localized to the cytoplasm and mitochondrial membrane, is involved in mitochondrial and peroxisomal division, and is essential for mitochondrial fission. Alternative splicing results in multiple transcript variants. A related pseudogene has been identified on chromosome 2.
Synonyms:	DLP1; DRP1; DVLP; DYMPLE; DYNIV-11; FLJ41912; HDYNIV; VPS1



[View online »](#)

Product images:



Host: Rabbit
Target Name: Dnm1l
Sample Type: Mouse Liver Lysate
Antibody Dilution: 1.0 μ g/ml

Host: Rabbit
Target Name: DNMI1L
Sample Tissue: Mouse Liver lysates
Antibody Dilution: 1 μ g/ml