

## Product datasheet for **TA363119**

### Sco1 Rabbit Polyclonal Antibody

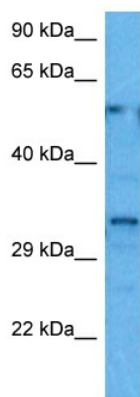
#### Product data:

Product Type:	Primary Antibodies
Applications:	WB
Reactivity:	Mouse
Host:	Rabbit
Clonality:	Polyclonal
Immunogen:	The immunogen is a synthetic peptide directed towards the middle region of mouse SCO1
Specificity:	<b>Expected reactivity:</b> Mouse
Formulation:	Liquid. Purified antibody supplied in 1x PBS buffer with 0.09% (w/v) sodium azide and 2% sucrose. <i>Note that this product is shipped as lyophilized powder to China customers.</i>
Concentration:	lot specific
Purification:	Affinity purified
Conjugation:	Unconjugated
Storage:	For short term use, store at 2-8°C up to 1 week. For long term storage, store at -20°C in small aliquots to prevent freeze-thaw cycles.
Stability:	Shelf life: one year from despatch.
Predicted Protein Size:	32 kDa
Gene Name:	SCO1 cytochrome c oxidase assembly protein
Database Link:	<a href="#">NP_001035115.1</a> <a href="#">Entrez Gene 52892 Mouse</a> <a href="#">Q5SUC9</a>
Background:	Copper metallochaperone essential for the maturation of cytochrome c oxidase subunit II (MT-CO2/COX2). Not required for the synthesis of MT-CO2/COX2 but plays a crucial role in stabilizing MT-CO2/COX2 during its subsequent maturation. Involved in transporting copper to the Cu(A) site on MT-CO2/COX2 (By similarity). Plays an important role in the regulation of copper homeostasis by controlling the abundance and cell membrane localization of copper transporter CTR1.
Synonyms:	SCOD1



[View online »](#)

## Product images:



Host: Rabbit  
Target Name: Sco1  
Sample Type: Mouse Stomach Lysate  
Antibody Dilution: 1.0 $\mu$ g/ml

Host: Rabbit  
Target Name: SCO1  
Sample Tissue: Mouse Stomach lysates  
Antibody Dilution: 1 ug/ml