

Product datasheet for **TA363116**

Wnt16 Rabbit Polyclonal Antibody

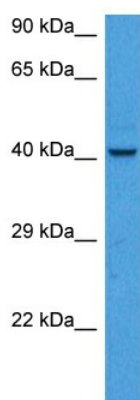
Product data:

Product Type:	Primary Antibodies
Applications:	WB
Reactivity:	Mouse
Host:	Rabbit
Clonality:	Polyclonal
Immunogen:	The immunogen is a synthetic peptide directed towards the middle region of mouse WNT16
Specificity:	Expected reactivity: Mouse
Formulation:	Liquid. Purified antibody supplied in 1x PBS buffer with 0.09% (w/v) sodium azide and 2% sucrose. <i>Note that this product is shipped as lyophilized powder to China customers.</i>
Concentration:	lot specific
Purification:	Affinity purified
Conjugation:	Unconjugated
Storage:	For short term use, store at 2-8°C up to 1 week. For long term storage, store at -20°C in small aliquots to prevent freeze-thaw cycles.
Stability:	Shelf life: one year from despatch.
Predicted Protein Size:	40 kDa
Gene Name:	wingless-type MMTV integration site family, member 16
Database Link:	NP_444346.3 Entrez Gene 93735 Mouse Q9QYS1
Background:	Ligand for members of the frizzled family of seven transmembrane receptors. Probable developmental protein. May be a signaling molecule which affects the development of discrete regions of tissues. Is likely to signal over only few cell diameters (By similarity).
Synonyms:	WNT16



[View online »](#)

Product images:



Host: Rabbit
Target Name: Wnt16
Sample Type: Mouse Kidney Lysate
Antibody Dilution: 1.0 μ g/ml

Host: Rabbit
Target Name: WNT16
Sample Tissue: Mouse Kidney lysates
Antibody Dilution: 1 μ g/ml