

Product datasheet for **TA363114**

Ing1 Rabbit Polyclonal Antibody

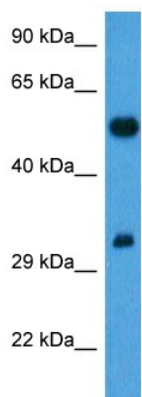
Product data:

Product Type:	Primary Antibodies
Applications:	WB
Reactivity:	Mouse
Host:	Rabbit
Clonality:	Polyclonal
Immunogen:	The immunogen is a synthetic peptide directed towards the middle region of mouse ING1
Specificity:	Expected reactivity: Mouse
Formulation:	Liquid. Purified antibody supplied in 1x PBS buffer with 0.09% (w/v) sodium azide and 2% sucrose. <i>Note that this product is shipped as lyophilized powder to China customers.</i>
Concentration:	lot specific
Purification:	Affinity purified
Conjugation:	Unconjugated
Storage:	For short term use, store at 2-8°C up to 1 week. For long term storage, store at -20°C in small aliquots to prevent freeze-thaw cycles.
Stability:	Shelf life: one year from despatch.
Predicted Protein Size:	32 kDa
Gene Name:	inhibitor of growth family, member 1
Database Link:	NP_001289386.1 Entrez Gene 26356 Mouse Q9QXV3
Background:	Isoform 1 inhibits p53-dependent transcriptional activation and may function as an oncoprotein. Isoform 2 acts as a negative growth regulator by cooperating with p53 in transcriptional activation of p53-responsive genes and may act as a tumor suppressor.
Synonyms:	p24ING1c; p33; p33ING1; p33ING1b; p47; p47ING1a



[View online »](#)

Product images:



Host: Rabbit
Target Name: Ing1
Sample Type: Mouse Brain Lysate
Antibody Dilution: 1.0 μ g/ml

Host: Rabbit
Target Name: ING1
Sample Tissue: Mouse Brain lysates
Antibody Dilution: 1 μ g/ml