

Product datasheet for **TA363112**

Ywhae Rabbit Polyclonal Antibody

Product data:

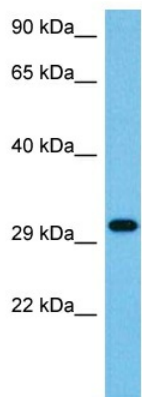
Product Type:	Primary Antibodies
Applications:	WB
Reactivity:	Mouse
Host:	Rabbit
Clonality:	Polyclonal
Immunogen:	The immunogen is a synthetic peptide directed towards the C terminal region of mouse YWHAE
Specificity:	Expected reactivity: Mouse
Formulation:	Liquid. Purified antibody supplied in 1x PBS buffer with 0.09% (w/v) sodium azide and 2% sucrose. <i>Note that this product is shipped as lyophilized powder to China customers.</i>
Concentration:	lot specific
Purification:	Affinity purified
Conjugation:	Unconjugated
Storage:	For short term use, store at 2-8°C up to 1 week. For long term storage, store at -20°C in small aliquots to prevent freeze-thaw cycles.
Stability:	Shelf life: one year from despatch.
Predicted Protein Size:	29 kDa
Gene Name:	tyrosine 3-monooxygenase/tryptophan 5-monooxygenase activation protein, epsilon polypeptide
Database Link:	NP_033562.3 Entrez Gene 22627 Mouse P62259
Background:	Adapter protein implicated in the regulation of a large spectrum of both general and specialized signaling pathways. Binds to a large number of partners, usually by recognition of a phosphoserine or phosphothreonine motif. Binding generally results in the modulation of the activity of the binding partner. Positively regulates phosphorylated protein HSF1 nuclear export to the cytoplasm.



[View online »](#)

Synonyms: 14-3-3E; FLJ45465; KCIP-1; MDCR; MDS

Product images:



Host: Rabbit
Target Name: Ywhae
Sample Type: Mouse Brain Lysate
Antibody Dilution: 1.0 μ g/ml

Host: Rabbit
Target Name: YWHAE
Sample Tissue: Mouse Brain lysates
Antibody Dilution: 1 μ g/ml