

Product datasheet for **TA363110**

Serpinh1 Rabbit Polyclonal Antibody

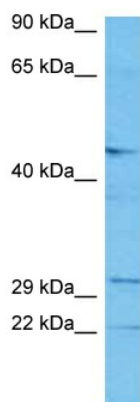
Product data:

Product Type:	Primary Antibodies
Applications:	WB
Reactivity:	Mouse
Host:	Rabbit
Clonality:	Polyclonal
Immunogen:	The immunogen is a synthetic peptide directed towards the middle region of mouse SERPINH1
Specificity:	Expected reactivity: Mouse
Formulation:	Liquid. Purified antibody supplied in 1x PBS buffer with 0.09% (w/v) sodium azide and 2% sucrose. <i>Note that this product is shipped as lyophilized powder to China customers.</i>
Concentration:	lot specific
Purification:	Affinity purified
Conjugation:	Unconjugated
Storage:	For short term use, store at 2-8°C up to 1 week. For long term storage, store at -20°C in small aliquots to prevent freeze-thaw cycles.
Stability:	Shelf life: one year from despatch.
Predicted Protein Size:	45 kDa
Gene Name:	serine (or cysteine) peptidase inhibitor, clade H, member 1
Database Link:	NP_001104513.1 Entrez Gene 12406 Mouse P19324
Background:	Binds specifically to collagen. Could be involved as a chaperone in the biosynthetic pathway of collagen.
Synonyms:	AsTP3; CBP1; CBP2; colligin; Colligin; colligin-1; colligin-2; gp46; HSP47; PIG14; PPROM; RA-A47; SERPINH2



[View online »](#)

Product images:



Host: Rabbit
Target Name: Serpinh1
Sample Type: Mouse Lung Lysate
Antibody Dilution: 1.0 μ g/ml

Host: Rabbit
Target Name: SERPINH1
Sample Tissue: Mouse Lung lysates
Antibody Dilution: 1 μ g/ml