

Product datasheet for **TA363107**

Casp2 Rabbit Polyclonal Antibody

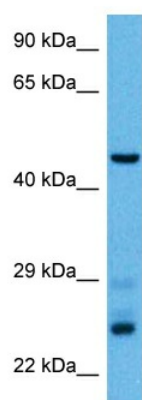
Product data:

Product Type:	Primary Antibodies
Applications:	WB
Reactivity:	Mouse
Host:	Rabbit
Clonality:	Polyclonal
Immunogen:	The immunogen is a synthetic peptide directed towards the middle region of mouse CASP2
Specificity:	Expected reactivity: Mouse
Formulation:	Liquid. Purified antibody supplied in 1x PBS buffer with 0.09% (w/v) sodium azide and 2% sucrose. <i>Note that this product is shipped as lyophilized powder to China customers.</i>
Concentration:	lot specific
Purification:	Affinity purified
Conjugation:	Unconjugated
Storage:	For short term use, store at 2-8°C up to 1 week. For long term storage, store at -20°C in small aliquots to prevent freeze-thaw cycles.
Stability:	Shelf life: one year from despatch.
Predicted Protein Size:	49 kDa
Gene Name:	caspase 2
Database Link:	NP_031636.1 Entrez Gene 12366 Mouse P29594
Background:	This gene encodes the evolutionarily ancient and most conserved member of the cysteine proteases that plays important role in stress-induced apoptosis, DNA repair and tumor suppression. Mice lacking the encoded protein develop normally but display cell type-specific apoptotic defects. Germ cells and oocytes from such mice were found to be resistant to cell death after treatment with chemotherapeutic drugs.
Synonyms:	CASP-2; ICH-1L; ICH-1L/1S; ICH1; NEDD-2; NEDD2



[View online »](#)

Product images:



Host: Rabbit
Target Name: Casp2
Sample Type: Mouse Pancreas Lysate
Antibody Dilution: 1.0 μ g/ml

Host: Rabbit
Target Name: CASP2
Sample Tissue: Mouse Pancreas lysates
Antibody Dilution: 1 ug/ml