

## Product datasheet for **TA363104**

### Adam8 Rabbit Polyclonal Antibody

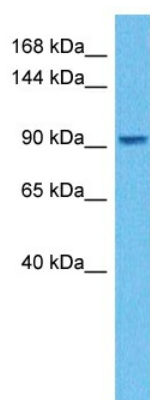
#### Product data:

Product Type:	Primary Antibodies
Applications:	WB
Reactivity:	Mouse
Host:	Rabbit
Clonality:	Polyclonal
Immunogen:	The immunogen is a synthetic peptide directed towards the N terminal region of mouse ADAM8
Specificity:	<b>Expected reactivity:</b> Mouse
Formulation:	Liquid. Purified antibody supplied in 1x PBS buffer with 0.09% (w/v) sodium azide and 2% sucrose. <i>Note that this product is shipped as lyophilized powder to China customers.</i>
Concentration:	lot specific
Purification:	Affinity purified
Conjugation:	Unconjugated
Storage:	For short term use, store at 2-8°C up to 1 week. For long term storage, store at -20°C in small aliquots to prevent freeze-thaw cycles.
Stability:	Shelf life: one year from despatch.
Predicted Protein Size:	90 kDa
Gene Name:	a disintegrin and metallopeptidase domain 8
Database Link:	<a href="#">NP_031429.1</a> <a href="#">Entrez Gene 11501 Mouse</a> <a href="#">Q05910</a>
Background:	This gene encodes a member of the Adam family of proteins that contain the disintegrin and metalloprotease domains. The encoded protein is localized to the cell surface, where it is involved in the remodeling of extracellular matrix and cell migration. Mice lacking the encoded protein display persistent inflammation upon treatment with allergens. Alternative splicing of this gene results in multiple variants.
Synonyms:	CD156; MGC134985; MS2



[View online »](#)

## Product images:



Host: Rabbit  
Target Name: Adam8  
Sample Type: Mouse Testis Lysate  
Antibody Dilution: 1.0 $\mu$ g/ml

Host: Rabbit  
Target Name: ADAM8  
Sample Tissue: Mouse Testis lysates  
Antibody Dilution: 1  $\mu$ g/ml