

## Product datasheet for **TA363097**

### **Rab1a Rabbit Polyclonal Antibody**

#### **Product data:**

Product Type:	Primary Antibodies
Applications:	WB
Reactivity:	Mouse
Host:	Rabbit
Clonality:	Polyclonal
Immunogen:	The immunogen is a synthetic peptide directed towards the middle region of mouse RAB1A
Specificity:	<b>Expected reactivity:</b> Mouse
Formulation:	Liquid. Purified antibody supplied in 1x PBS buffer with 0.09% (w/v) sodium azide and 2% sucrose. <i>Note that this product is shipped as lyophilized powder to China customers.</i>
Concentration:	lot specific
Purification:	Affinity purified
Conjugation:	Unconjugated
Storage:	For short term use, store at 2-8°C up to 1 week. For long term storage, store at -20°C in small aliquots to prevent freeze-thaw cycles.
Stability:	Shelf life: one year from despatch.
Predicted Protein Size:	23 kDa
Gene Name:	RAB1A, member RAS oncogene family
Database Link:	<a href="#">NP_033022.1</a> <a href="#">Entrez Gene 19324 Mouse</a> <a href="#">P62821</a>



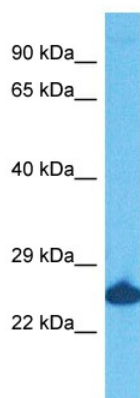
[View online »](#)

**Background:**

The small GTPases Rab are key regulators of intracellular membrane trafficking, from the formation of transport vesicles to their fusion with membranes. Rabs cycle between an inactive GDP-bound form and an active GTP-bound form that is able to recruit to membranes different sets of downstream effectors directly responsible for vesicle formation, movement, tethering and fusion. RAB1A regulates vesicular protein transport from the endoplasmic reticulum (ER) to the Golgi compartment and on to the cell surface, and plays a role in IL-8 and growth hormone secretion. Regulates the level of CASR present at the cell membrane. Plays a role in cell adhesion and cell migration, via its role in protein trafficking. Plays a role in autophagosome assembly and cellular defense reactions against pathogenic bacteria (By similarity). Plays a role in microtubule-dependent protein transport by early endosomes and in anterograde melanosome transport.

**Synonyms:**

DKFZp564B163; RAB1; YPT1

**Product images:**


Host: Rabbit  
Target Name: Rab1A  
Sample Type: Mouse Brain Lysate  
Antibody Dilution: 1.0µg/ml

Host: Rabbit  
Target Name: RAB1A  
Sample Tissue: Mouse Brain lysates  
Antibody Dilution: 1ug/ml