

## Product datasheet for **TA363095**

### Stx1a Rabbit Polyclonal Antibody

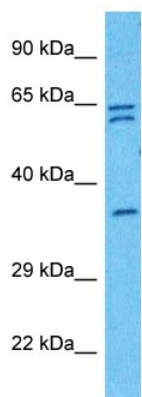
#### Product data:

Product Type:	Primary Antibodies
Applications:	WB
Reactivity:	Mouse
Host:	Rabbit
Clonality:	Polyclonal
Immunogen:	The immunogen is a synthetic peptide directed towards the N terminal region of mouse STX1A
Specificity:	<b>Expected reactivity:</b> Mouse
Formulation:	Liquid. Purified antibody supplied in 1x PBS buffer with 0.09% (w/v) sodium azide and 2% sucrose. <i>Note that this product is shipped as lyophilized powder to China customers.</i>
Concentration:	lot specific
Purification:	Affinity purified
Conjugation:	Unconjugated
Storage:	For short term use, store at 2-8°C up to 1 week. For long term storage, store at -20°C in small aliquots to prevent freeze-thaw cycles.
Stability:	Shelf life: one year from despatch.
Predicted Protein Size:	33 kDa
Gene Name:	syntaxin 1A (brain)
Database Link:	<a href="#">NP_058081.2</a> <a href="#">Entrez Gene 20907 Mouse O35526</a>
Background:	Plays a role in hormone and neurotransmitter exocytosis (By similarity). Potentially involved in docking of synaptic vesicles at presynaptic active zones. May mediate Ca <sup>2+</sup> -regulation of exocytosis acrosomal reaction in sperm (PubMed:15774481).
Synonyms:	HPC-1; p35-1; STX1



[View online »](#)

Product images:



Host: Rabbit  
Target Name: Stx1a  
Sample Type: Mouse Lung Lysate  
Antibody Dilution: 1.0 $\mu$ g/ml

Host: Rabbit  
Target Name: STX1A  
Sample Tissue: Mouse Lung lysates  
Antibody Dilution: 1  $\mu$ g/ml