

Product datasheet for **TA363093**

Fth1 Rabbit Polyclonal Antibody

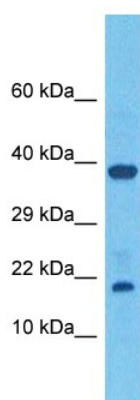
Product data:

Product Type:	Primary Antibodies
Applications:	WB
Reactivity:	Mouse
Host:	Rabbit
Clonality:	Polyclonal
Immunogen:	The immunogen is a synthetic peptide directed towards the middle region of mouse FTH1
Specificity:	Expected reactivity: Mouse
Formulation:	Liquid. Purified antibody supplied in 1x PBS buffer with 0.09% (w/v) sodium azide and 2% sucrose. <i>Note that this product is shipped as lyophilized powder to China customers.</i>
Concentration:	lot specific
Purification:	Affinity purified
Conjugation:	Unconjugated
Storage:	For short term use, store at 2-8°C up to 1 week. For long term storage, store at -20°C in small aliquots to prevent freeze-thaw cycles.
Stability:	Shelf life: one year from despatch.
Predicted Protein Size:	20 kDa
Gene Name:	ferritin heavy polypeptide 1
Database Link:	NP_034369.1 Entrez Gene 14319 Mouse P09528
Background:	Stores iron in a soluble, non-toxic, readily available form. Important for iron homeostasis. Has ferroxidase activity. Iron is taken up in the ferrous form and deposited as ferric hydroxides after oxidation. Also plays a role in delivery of iron to cells. Mediates iron uptake in capsule cells of the developing kidney.
Synonyms:	apoferritin; FHC; FTH; FTHL6; MGC104426; PIG15; PLIF



[View online »](#)

Product images:



Host: Rabbit
Target Name: Fth1
Sample Type: Mouse Kidney Lysate
Antibody Dilution: 1.0 μ g/ml

Host: Rabbit
Target Name: FTH1
Sample Tissue: Mouse Kidney lysates
Antibody Dilution: 1 μ g/ml