

Product datasheet for **TA363091**

Serpib2 Rabbit Polyclonal Antibody

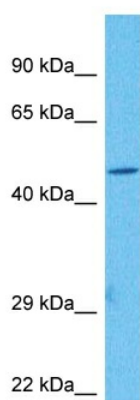
Product data:

Product Type:	Primary Antibodies
Applications:	WB
Reactivity:	Mouse
Host:	Rabbit
Clonality:	Polyclonal
Immunogen:	The immunogen is a synthetic peptide directed towards the C terminal region of mouse SERPINB2
Specificity:	Expected reactivity: Mouse
Formulation:	Liquid. Purified antibody supplied in 1x PBS buffer with 0.09% (w/v) sodium azide and 2% sucrose. <i>Note that this product is shipped as lyophilized powder to China customers.</i>
Concentration:	lot specific
Purification:	Affinity purified
Conjugation:	Unconjugated
Storage:	For short term use, store at 2-8°C up to 1 week. For long term storage, store at -20°C in small aliquots to prevent freeze-thaw cycles.
Stability:	Shelf life: one year from despatch.
Predicted Protein Size:	45 kDa
Gene Name:	serine (or cysteine) peptidase inhibitor, clade B, member 2
Database Link:	NP_001167641.1 Entrez Gene 18788 Mouse P12388
Background:	Inhibits urokinase-type plasminogen activator. The monocyte derived PAI-2 is distinct from the endothelial cell-derived PAI-1. Not required for normal murine development or survival.
Synonyms:	HsT1201; PAI; PAI-2; PAI2; PLANH2



[View online »](#)

Product images:



Host: Rabbit
Target Name: Serpinb2
Sample Type: Mouse Kidney Lysate
Antibody Dilution: 1.0 μ g/ml

Host: Rabbit
Target Name: SERPINB2
Sample Tissue: Mouse Kidney lysates
Antibody Dilution: 1 μ g/ml