

Product datasheet for **TA363088**

Adora2a Rabbit Polyclonal Antibody

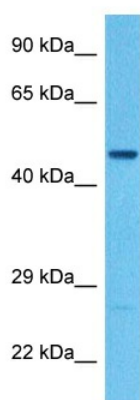
Product data:

Product Type:	Primary Antibodies
Applications:	WB
Reactivity:	Mouse
Host:	Rabbit
Clonality:	Polyclonal
Immunogen:	The immunogen is a synthetic peptide directed towards the middle region of mouse ADORA2A
Specificity:	Expected reactivity: Mouse
Formulation:	Liquid. Purified antibody supplied in 1x PBS buffer with 0.09% (w/v) sodium azide and 2% sucrose. <i>Note that this product is shipped as lyophilized powder to China customers.</i>
Concentration:	lot specific
Purification:	Affinity purified
Conjugation:	Unconjugated
Storage:	For short term use, store at 2-8°C up to 1 week. For long term storage, store at -20°C in small aliquots to prevent freeze-thaw cycles.
Stability:	Shelf life: one year from despatch.
Predicted Protein Size:	45 kDa
Gene Name:	adenosine A2a receptor
Database Link:	NP_033760.2 Entrez Gene 11540 Mouse Q60613
Background:	Receptor for adenosine. The activity of this receptor is mediated by G proteins which activate adenylyl cyclase.
Synonyms:	ADORA2; hA2aR; RDC8



[View online »](#)

Product images:



Host: Rabbit
Target Name: Adora2a
Sample Type: Mouse Thymus Lysate
Antibody Dilution: 1.0 µg/ml

Host: Rabbit
Target Name: ADORA2A
Sample Tissue: Mouse Thymus lysates
Antibody Dilution: 1 µg/ml