

Product datasheet for **TA363087**

Sema3f Rabbit Polyclonal Antibody

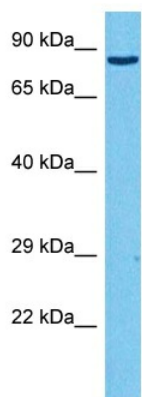
Product data:

Product Type:	Primary Antibodies
Applications:	WB
Reactivity:	Mouse
Host:	Rabbit
Clonality:	Polyclonal
Immunogen:	The immunogen is a synthetic peptide directed towards the C terminal region of mouse SEMA3F
Specificity:	Expected reactivity: Mouse
Formulation:	Liquid. Purified antibody supplied in 1x PBS buffer with 0.09% (w/v) sodium azide and 2% sucrose. <i>Note that this product is shipped as lyophilized powder to China customers.</i>
Concentration:	lot specific
Purification:	Affinity purified
Conjugation:	Unconjugated
Storage:	For short term use, store at 2-8°C up to 1 week. For long term storage, store at -20°C in small aliquots to prevent freeze-thaw cycles.
Stability:	Shelf life: one year from despatch.
Predicted Protein Size:	85 kDa
Gene Name:	sema domain, immunoglobulin domain (Ig), short basic domain, secreted, (semaphorin) 3F
Database Link:	NP_001298080.1 Entrez Gene 20350 Mouse O88632-2
Background:	The function of this protein remains unknown.
Synonyms:	SEMA-IV; SEMA4; SEMAK



[View online »](#)

Product images:



Host: Rabbit
Target Name: Sema3f
Sample Type: Mouse Testis Lysate
Antibody Dilution: 1.0µg/ml

Host: Rabbit
Target Name: SEMA3F
Sample Tissue: Mouse Testis lysates
Antibody Dilution: 1ug/ml