

## Product datasheet for **TA363083**

### Lmnb1 Rabbit Polyclonal Antibody

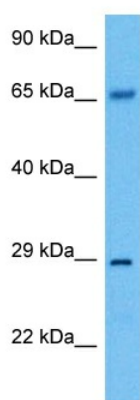
#### Product data:

Product Type:	Primary Antibodies
Applications:	WB
Reactivity:	Mouse
Host:	Rabbit
Clonality:	Polyclonal
Immunogen:	The immunogen is a synthetic peptide directed towards the middle region of mouse LMNB1
Specificity:	<b>Expected reactivity:</b> Mouse
Formulation:	Liquid. Purified antibody supplied in 1x PBS buffer with 0.09% (w/v) sodium azide and 2% sucrose. <i>Note that this product is shipped as lyophilized powder to China customers.</i>
Concentration:	lot specific
Purification:	Affinity purified
Conjugation:	Unconjugated
Storage:	For short term use, store at 2-8°C up to 1 week. For long term storage, store at -20°C in small aliquots to prevent freeze-thaw cycles.
Stability:	Shelf life: one year from despatch.
Predicted Protein Size:	64 kDa
Gene Name:	lamin B1
Database Link:	<a href="#">NP_034851.2</a> <a href="#">Entrez Gene 16906 Mouse</a> <a href="#">P14733</a>
Background:	Lamins are components of the nuclear lamina, a fibrous layer on the nucleoplasmic side of the inner nuclear membrane, which is thought to provide a framework for the nuclear envelope and may also interact with chromatin.
Synonyms:	ADLD; LMN; LMN2; LMNB; MGC111419



[View online »](#)

## Product images:



Host: Rabbit  
Target Name: Lmnb1  
Sample Type: Mouse Spleen Lysate  
Antibody Dilution: 1.0 $\mu$ g/ml

Host: Rabbit  
Target Name: LMNB1  
Sample Tissue: Mouse Spleen lysates  
Antibody Dilution: 1 $\mu$ g/ml