

Product datasheet for **TA363082**

Otx1 Rabbit Polyclonal Antibody

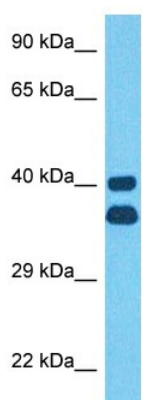
Product data:

Product Type:	Primary Antibodies
Applications:	WB
Reactivity:	Mouse
Host:	Rabbit
Clonality:	Polyclonal
Immunogen:	The immunogen is a synthetic peptide directed towards the middle region of mouse OTX1
Specificity:	Expected reactivity: Mouse
Formulation:	Liquid. Purified antibody supplied in 1x PBS buffer with 0.09% (w/v) sodium azide and 2% sucrose. <i>Note that this product is shipped as lyophilized powder to China customers.</i>
Concentration:	lot specific
Purification:	Affinity purified
Conjugation:	Unconjugated
Storage:	For short term use, store at 2-8°C up to 1 week. For long term storage, store at -20°C in small aliquots to prevent freeze-thaw cycles.
Stability:	Shelf life: one year from despatch.
Predicted Protein Size:	39 kDa
Gene Name:	orthodenticle homeobox 1
Database Link:	NP_035153.1 Entrez Gene 18423 Mouse P80205
Background:	This gene encodes a member of the bicoid subfamily of the paired homeobox transcription factor family. The encoded protein is critical to the maintenance and regionalization of the forebrain and midbrain during development. It may also have important functions in sense organ development, pituitary function, and in the regulation of blood cell production.
Synonyms:	FLJ38361; MGC15736; OTTHUMP00000201938



[View online »](#)

Product images:



Host: Rabbit
Target Name: Otx1
Sample Type: Mouse Lung Lysate
Antibody Dilution: 1.0 μ g/ml

Host: Rabbit
Target Name: OTX1
Sample Tissue: Mouse Lung lysates
Antibody Dilution: 1 μ g/ml