

Product datasheet for **TA363081**

Nup62 Rabbit Polyclonal Antibody

Product data:

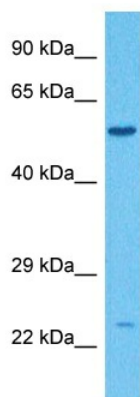
Product Type:	Primary Antibodies
Applications:	WB
Reactivity:	Mouse
Host:	Rabbit
Clonality:	Polyclonal
Immunogen:	The immunogen is a synthetic peptide directed towards the middle region of mouse NUP62
Specificity:	Expected reactivity: Mouse
Formulation:	Liquid. Purified antibody supplied in 1x PBS buffer with 0.09% (w/v) sodium azide and 2% sucrose. <i>Note that this product is shipped as lyophilized powder to China customers.</i>
Concentration:	lot specific
Purification:	Affinity purified
Conjugation:	Unconjugated
Storage:	For short term use, store at 2-8°C up to 1 week. For long term storage, store at -20°C in small aliquots to prevent freeze-thaw cycles.
Stability:	Shelf life: one year from despatch.
Predicted Protein Size:	57 kDa
Gene Name:	nucleoporin 62
Database Link:	NP_444304.1 Entrez Gene 18226 Mouse Q63850
Background:	Essential component of the nuclear pore complex. The N-terminal is probably involved in nucleocytoplasmic transport. The C-terminal is involved in protein-protein interaction probably via coiled-coil formation, promotes its association with centrosomes and may function in anchorage of p62 to the pore complex. Plays a role in mitotic cell cycle progression by regulating centrosome segregation, centriole maturation and spindle orientation. It might be involved in protein recruitment to the centrosome after nuclear breakdown.



[View online »](#)

Synonyms: DKFZp547L134; FLJ20822; FLJ43869; IBSN; MGC841; p62; SNDI

Product images:



Host: Rabbit
Target Name: Nup62
Sample Type: Mouse Testis Lysate
Antibody Dilution: 1.0 µg/ml

Host: Rabbit
Target Name: NUP62
Sample Tissue: Mouse Testis lysates
Antibody Dilution: 1 µg/ml