

Product datasheet for **TA363077**

Snap23 Rabbit Polyclonal Antibody

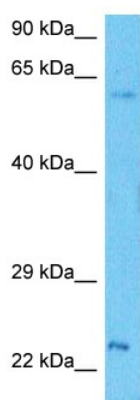
Product data:

Product Type:	Primary Antibodies
Applications:	WB
Reactivity:	Mouse
Host:	Rabbit
Clonality:	Polyclonal
Immunogen:	The immunogen is a synthetic peptide directed towards the middle region of mouse SNAP23
Specificity:	Expected reactivity: Mouse
Formulation:	Liquid. Purified antibody supplied in 1x PBS buffer with 0.09% (w/v) sodium azide and 2% sucrose. <i>Note that this product is shipped as lyophilized powder to China customers.</i>
Concentration:	lot specific
Purification:	Affinity purified
Conjugation:	Unconjugated
Storage:	For short term use, store at 2-8°C up to 1 week. For long term storage, store at -20°C in small aliquots to prevent freeze-thaw cycles.
Stability:	Shelf life: one year from despatch.
Predicted Protein Size:	23 kDa
Gene Name:	synaptosomal-associated protein 23
Database Link:	NP_001171263.1 Entrez Gene 20619 Mouse O09044
Background:	Essential component of the high affinity receptor for the general membrane fusion machinery and an important regulator of transport vesicle docking and fusion.
Synonyms:	HsT17016; OTTHUMP00000161263; SNAP-23; SNAP23A; SNAP23B



[View online »](#)

Product images:



Host: Rabbit
Target Name: Snap23
Sample Type: SP2/0 Cell Lysate
Antibody Dilution: 1.0 μ g/ml

Host: Rabbit
Target Name: SNAP23
Sample Tissue: Mouse SP2/0 Whole Cell lysates
Antibody Dilution: 1 μ g/ml