

## Product datasheet for **TA363076**

### Tbx20 Rabbit Polyclonal Antibody

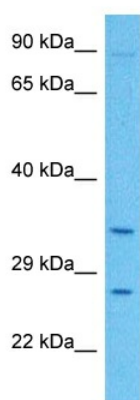
#### Product data:

Product Type:	Primary Antibodies
Applications:	WB
Reactivity:	Mouse
Host:	Rabbit
Clonality:	Polyclonal
Immunogen:	The immunogen is a synthetic peptide directed towards the middle region of mouse TBX20
Specificity:	<b>Expected reactivity:</b> Mouse
Formulation:	Liquid. Purified antibody supplied in 1x PBS buffer with 0.09% (w/v) sodium azide and 2% sucrose. <i>Note that this product is shipped as lyophilized powder to China customers.</i>
Concentration:	lot specific
Purification:	Affinity purified
Conjugation:	Unconjugated
Storage:	For short term use, store at 2-8°C up to 1 week. For long term storage, store at -20°C in small aliquots to prevent freeze-thaw cycles.
Stability:	Shelf life: one year from despatch.
Predicted Protein Size:	32 kDa
Gene Name:	T-box 20
Database Link:	<a href="#">NP_001192014.1</a> <a href="#">Entrez Gene 57246 Mouse</a> <a href="#">Q9ES03-2</a>
Background:	Acts as a transcriptional activator and repressor required for cardiac development and may have key roles in the maintenance of functional and structural phenotypes in adult heart.
Synonyms:	9430010M06Rik; AL022859; ASD4; Tbx12



[View online »](#)

## Product images:



Host: Rabbit  
Target Name: Tbx20  
Sample Type: Mouse Liver Lysate  
Antibody Dilution: 1.0 $\mu$ g/ml

Host: Rabbit  
Target Name: TBX20  
Sample Tissue: Mouse Liver lysates  
Antibody Dilution: 1 $\mu$ g/ml