

Product datasheet for **TA363069**

Lsm1 Rabbit Polyclonal Antibody

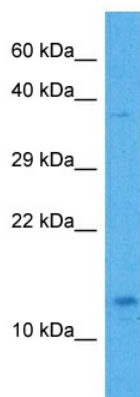
Product data:

| | |
|-------------------------|--|
| Product Type: | Primary Antibodies |
| Applications: | WB |
| Reactivity: | Mouse |
| Host: | Rabbit |
| Clonality: | Polyclonal |
| Immunogen: | The immunogen is a synthetic peptide directed towards the middle region of mouse LSM1 |
| Specificity: | Expected reactivity: Mouse |
| Formulation: | Liquid. Purified antibody supplied in 1x PBS buffer with 0.09% (w/v) sodium azide and 2% sucrose. <i>Note that this product is shipped as lyophilized powder to China customers.</i> |
| Concentration: | lot specific |
| Purification: | Affinity purified |
| Conjugation: | Unconjugated |
| Storage: | For short term use, store at 2-8°C up to 1 week. For long term storage, store at -20°C in small aliquots to prevent freeze-thaw cycles. |
| Stability: | Shelf life: one year from despatch. |
| Predicted Protein Size: | 14 kDa |
| Gene Name: | LSM1 homolog, mRNA degradation associated |
| Database Link: | NP_080308.1 Entrez Gene 67207 Mouse Q8VC85 |
| Background: | Plays a role in the degradation of histone mRNAs, the only eukaryotic mRNAs that are not polyadenylated (By similarity). Probably also part of an LSM subunits-containing complex involved in the general process of mRNA degradation (By similarity). |
| Synonyms: | CASM; YJL124C |



[View online »](#)

Product images:



Host: Rabbit
Target Name: Lsm1
Sample Type: Mouse Spleen Lysate
Antibody Dilution: 1.0 μ g/ml

Host: Rabbit
Target Name: LSM1
Sample Tissue: Mouse Spleen lysates
Antibody Dilution: 1 μ g/ml