

Product datasheet for **TA363054**

Parp2 Rabbit Polyclonal Antibody

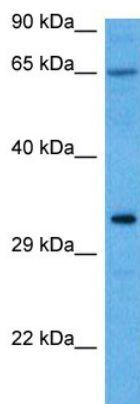
Product data:

Product Type:	Primary Antibodies
Applications:	WB
Reactivity:	Mouse
Host:	Rabbit
Clonality:	Polyclonal
Immunogen:	The immunogen is a synthetic peptide directed towards the middle region of mouse PARP2
Specificity:	Expected reactivity: Mouse
Formulation:	Liquid. Purified antibody supplied in 1x PBS buffer with 0.09% (w/v) sodium azide and 2% sucrose. <i>Note that this product is shipped as lyophilized powder to China customers.</i>
Concentration:	lot specific
Purification:	Affinity purified
Conjugation:	Unconjugated
Storage:	For short term use, store at 2-8°C up to 1 week. For long term storage, store at -20°C in small aliquots to prevent freeze-thaw cycles.
Stability:	Shelf life: one year from despatch.
Predicted Protein Size:	61 kDa
Gene Name:	poly (ADP-ribose) polymerase family, member 2
Database Link:	NP_033762.1 Entrez Gene 11546 Mouse O88554
Background:	Involved in the base excision repair (BER) pathway, by catalyzing the poly(ADP-ribosyl)ation of a limited number of acceptor proteins involved in chromatin architecture and in DNA metabolism. This modification follows DNA damages and appears as an obligatory step in a detection/signaling pathway leading to the reparation of DNA strand breaks. Mediates serine ADP-ribosylation of target proteins following interaction with HPF1; HPF1 conferring serine specificity (By similarity).
Synonyms:	ADPRT2; ADPRTL2; ADPRTL3; hPARP-2; pADPRT-2; PARP-2



[View online »](#)

Product images:



Host: Rabbit
Target Name: Parp2
Sample Type: Mouse Brain Lysate
Antibody Dilution: 1.0 μ g/ml

Host: Rabbit
Target Name: PARP2
Sample Tissue: Mouse Brain lysates
Antibody Dilution: 1 μ g/ml