

## Product datasheet for **TA363051**

### **Aldh1a3 Rabbit Polyclonal Antibody**

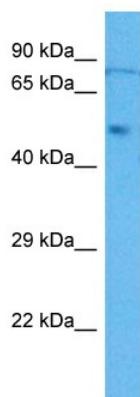
#### **Product data:**

Product Type:	Primary Antibodies
Applications:	WB
Reactivity:	Mouse
Host:	Rabbit
Clonality:	Polyclonal
Immunogen:	The immunogen is a synthetic peptide directed towards the middle region of mouse ALDH1A3
Specificity:	<b>Expected reactivity:</b> Mouse
Formulation:	Liquid. Purified antibody supplied in 1x PBS buffer with 0.09% (w/v) sodium azide and 2% sucrose. <i>Note that this product is shipped as lyophilized powder to China customers.</i>
Concentration:	lot specific
Purification:	Affinity purified
Conjugation:	Unconjugated
Storage:	For short term use, store at 2-8°C up to 1 week. For long term storage, store at -20°C in small aliquots to prevent freeze-thaw cycles.
Stability:	Shelf life: one year from despatch.
Predicted Protein Size:	56 kDa
Gene Name:	aldehyde dehydrogenase family 1, subfamily A3
Database Link:	<a href="#">NP_444310.3</a> <a href="#">Entrez Gene 56847 Mouse</a> <a href="#">Q9JHW9</a>
Background:	NAD-dependent aldehyde dehydrogenase that catalyzes the formation of retinoic acid. Has high activity with all-trans retinal, and has much lower in vitro activity with acetaldehyde (By similarity). Required for the biosynthesis of normal levels of retinoic acid in the embryonic ocular and nasal regions; retinoic acid is required for normal embryonic development of the eye and the nasal region.
Synonyms:	ALDH1A6; ALDH6; RALDH-3; RALDH3



[View online »](#)

Product images:



Host: Rabbit  
Target Name: Aldh1a3  
Sample Type: Mouse Lung Lysate  
Antibody Dilution: 1.0µg/ml

Host: Rabbit  
Target Name: ALDH1A3  
Sample Tissue: Mouse Lung lysates  
Antibody Dilution: 1 ug/ml