

## Product datasheet for **TA363048**

### Eno2 Rabbit Polyclonal Antibody

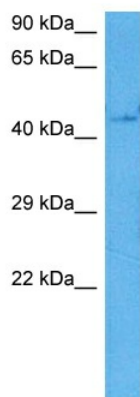
#### Product data:

Product Type:	Primary Antibodies
Applications:	WB
Reactivity:	Mouse
Host:	Rabbit
Clonality:	Polyclonal
Immunogen:	The immunogen is a synthetic peptide directed towards the middle region of mouse ENO2
Specificity:	<b>Expected reactivity:</b> Mouse
Formulation:	Liquid. Purified antibody supplied in 1x PBS buffer with 0.09% (w/v) sodium azide and 2% sucrose. <i>Note that this product is shipped as lyophilized powder to China customers.</i>
Concentration:	lot specific
Purification:	Affinity purified
Conjugation:	Unconjugated
Storage:	For short term use, store at 2-8°C up to 1 week. For long term storage, store at -20°C in small aliquots to prevent freeze-thaw cycles.
Stability:	Shelf life: one year from despatch.
Predicted Protein Size:	47 kDa
Gene Name:	enolase 2, gamma neuronal
Database Link:	<a href="#">NP_001289571.1</a> <a href="#">Entrez Gene 13807 Mouse</a> <a href="#">P17183</a>
Background:	Has neurotrophic and neuroprotective properties on a broad spectrum of central nervous system (CNS) neurons. Binds, in a calcium-dependent manner, to cultured neocortical neurons and promotes cell survival (By similarity).
Synonyms:	NSE



[View online »](#)

## Product images:



Host: Rabbit  
Target Name: Eno2  
Sample Type: Mouse Small Intestine Lysate  
Antibody Dilution: 1.0µg/ml

Host: Rabbit  
Target Name: ENO2  
Sample Tissue: Mouse Small Intestine lysates  
Antibody Dilution: 1ug/ml