

## Product datasheet for **TA363047**

### Arf4 Rabbit Polyclonal Antibody

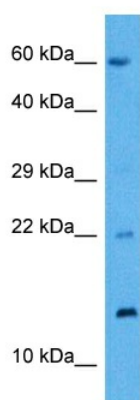
#### Product data:

|                         |  |
|-------------------------|--|
| Product Type:           | Primary Antibodies   |
| Applications:           | WB   |
| Reactivity:             | Mouse  |
| Host:                   | Rabbit   |
| Clonality:              | Polyclonal   |
| Immunogen:              | The immunogen is a synthetic peptide directed towards the middle region of mouse ARF4  |
| Specificity:            | <b>Expected reactivity:</b> Mouse  |
| Formulation:            | Liquid. Purified antibody supplied in 1x PBS buffer with 0.09% (w/v) sodium azide and 2% sucrose.<br><i>Note that this product is shipped as lyophilized powder to China customers.</i>  |
| Concentration:          | lot specific   |
| Purification:           | Affinity purified  |
| Conjugation:            | Unconjugated   |
| Storage:                | For short term use, store at 2-8°C up to 1 week. For long term storage, store at -20°C in small aliquots to prevent freeze-thaw cycles.  |
| Stability:              | Shelf life: one year from despatch.  |
| Predicted Protein Size: | 20 kDa   |
| Gene Name:              | ADP-ribosylation factor 4  |
| Database Link:          | <a href="#">NP_031505.1</a><br><a href="#">Entrez Gene 11843 Mouse</a><br><a href="#">P61750</a>   |
| Background:             | GTP-binding protein that functions as an allosteric activator of the cholera toxin catalytic subunit, an ADP-ribosyltransferase. Involved in protein trafficking; may modulate vesicle budding and uncoating within the Golgi apparatus. |
| Synonyms:               | ARF2   |



[View online »](#)

## Product images:



Host: Rabbit  
Target Name: Arf4  
Sample Type: Mouse Pancreas Lysate  
Antibody Dilution: 1.0 $\mu$ g/ml

Host: Rabbit  
Target Name: ARF4  
Sample Tissue: Mouse Pancreas lysates  
Antibody Dilution: 1 $\mu$ g/ml